

# KARIBAN

**REFERENCE :** K6111

**SIZES :** XS\_S\_M\_L\_XL\_XXL

**COMPOSITION :**

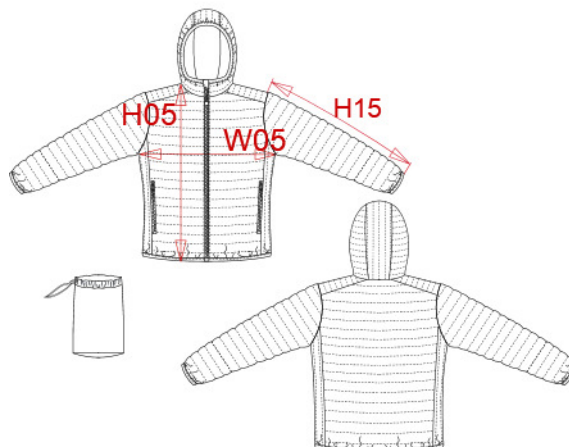
Main fabric : Polyamide 380T PA coating- 35 For Garment and packable bag 100%polyamide

Fabric : Polyester 380T PA coating - 45 For Garment and packable bag 100%polyester

Main fabric : Polyamide 380T PA coating- 35 For inside garment and pockets 100%polyamide

Wad 1 : Padding Polyester fake down (micro broken) - 260/270

Inside body,sleeve and hood 100%polyester



**WEIGHT :**

Main fabric : 35 gsm

Fabric : 45 gsm

Main fabric : 35 gsm

Wad 1 : 260/270 gsm

**TECHNICAL DETAIL :**

Coating for fake down proof

**ARTICLE WEIGHT :**

465 gr/pc

DESCRIPTION								COLORS		PANTONE SERIGRAPHIE	
<b>Français :</b> Doudoune légère capuche femme								Black	Black		
<b>English :</b> Ladies' lightweight hooded down jacket								Navy	433C		
<b>Nederlands :</b> Lichte damesjas met capuchon								Light royal blue	653C		
<b>Deutsch :</b> Leichte Damen-Steppjacke mit Kapuze								Red	200C		
<b>Español :</b> Chaqueta acolchada ligera con capucha para mujer								Marl dark grey	Based on 446C		
<b>Italiano :</b> Piumino donna leggero con cappuccio								Marl silver	Based on 877C		
<b>Português :</b> Blusão de senhora acolchoado leve com capuz								White	White		
								Wine	504C		
MEASUREMENT											
Description	XS	S	M	L	XL	XXL					
<b>H05 (L)</b> Hauteur totale / Total height	60	62	64	66	68	70					
<b>W05</b> 1/2 largeur poitrine terminée/ 1/2 chest width after sewing	46	49	52	55	58	61					
<b>H15</b> Longueur manche / Sleeve length	64	65	66	67	68	69					
CARE LABEL											
PACKING											
Box	15 pcs / box XS => L: 60cm W: 40cm H: 35cm GW: 6.2kg NW: 5.2kg S => L: 60cm W: 40cm H: 35cm GW: 6.4kg NW: 5.4 kg M => L: 60cm W: 40cm H: 35cm GW: 6.8kg NW: 5.8 kg L => L: 60cm W: 40cm H: 35cm GW: 6.9kg NW: 5.9kg XL => L: 60cm W: 40cm H: 40cm GW: 7.1kg NW: 6.1 kg XXL => L: 60cm W: 40cm H: 40cm GW: 7.3kg NW: 6.3kg										