

# KARIBAN

**REFERENCE :** K6110

**SIZES :** S\_M\_L\_XL\_XXL\_3XL\_4XL

**COMPOSITION :**

Main fabric : Polyamide 380T PA coating- 35 For Garment and packable bag 100%polyamide

Fabric : Polyester 380T PA coating - 45 For Garment and packable bag 100%polyester

Main fabric : Polyamide 380T PA coating- 35 For inside garment and pockets 100%polyamide

Wad 1 : Padding Polyester fake down (micro broken) - 260/270

Inside body,sleeve and hood 100%polyester

**WEIGHT :**

Main fabric : 35 gsm

Fabric : 45 gsm

Main fabric : 35 gsm

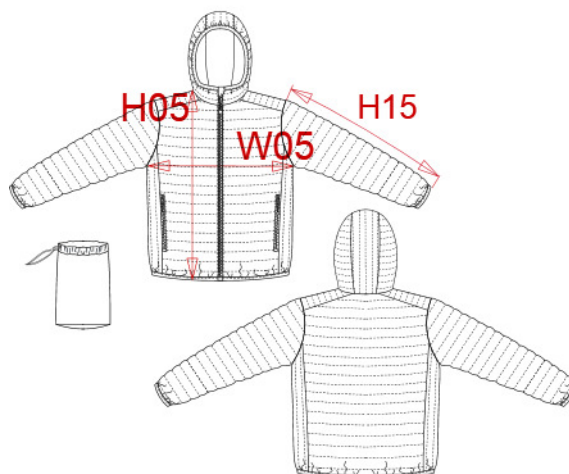
Wad 1 : 260/270 gsm

**TECHNICAL DETAIL :**

Coating for fake down proof

**ARTICLE WEIGHT :**

526 gr/pc



DESCRIPTION
<b>Français :</b> Doudoune légère capuche homme
<b>English :</b> Men's lightweight hooded down jacket
<b>Nederlands :</b> Lichte herenjas met capuchon
<b>Deutsch :</b> Leichte Herren-Steppjacke mit Kapuze
<b>Español :</b> Chaqueta acolchada ligera con capucha para hombre
<b>Italiano :</b> Piumino uomo leggero con cappuccio
<b>Português :</b> Blusão acolchoado leve com capuz

COLORS	PANTONE SERIGRAPHIE
Black	Black
Navy	433C
Light royal blue	653C
Red	200C
Marl dark grey	Based on 446C
Marl silver	Based on 877C
White	White
Wine	504C

MEASUREMENT							
Description	S	M	L	XL	XXL	3XL	4XL
<b>H05</b> Hauteur totale terminée / Total height after sewing	70	72	74	76	78	80	82
<b>W05</b> 1/2 largeur poitrine terminée/ 1/2 chest width after sewing	54	57	60	63	66	69	72
<b>H15</b> Longueur manche / Sleeve length	68,75	69,75	70,75	71,75	72,75	73,75	74,75

CARE LABEL

PACKING	
Box	15 pcs / box S => L:60cm W:40cm H:40cm GW:8.8kg NW:7.2kg M => L:60cm W:40cm H:40cm GW:9.2kg NW:7.7kg L => L:60cm W:40cm H:40cm GW:9.5kg NW:8 kg XL => L:60cm W:40cm H:40cm GW:9.9kg NW:8.6kg XXL => L:60cm W:40cm H:42cm GW:10.5kg NW:8.7kg 3XL => L:60cm W:40cm H:42cm GW:10.9kg NW:8.9kg 4XL => L:60cm W:40cm H:42cm GW:11.2kg NW:9.3kg