

# KARIBAN

**REFERENCE :** K402

**SIZES :** 6/8\_8/10\_10/12\_12/14

**COMPOSITION :**

Fabric 1 : 3 layers Softshell (Plain weave/Micropolar fleece)  
Polyester / Elastane 95/5 - 300 .

**WEIGHT :**

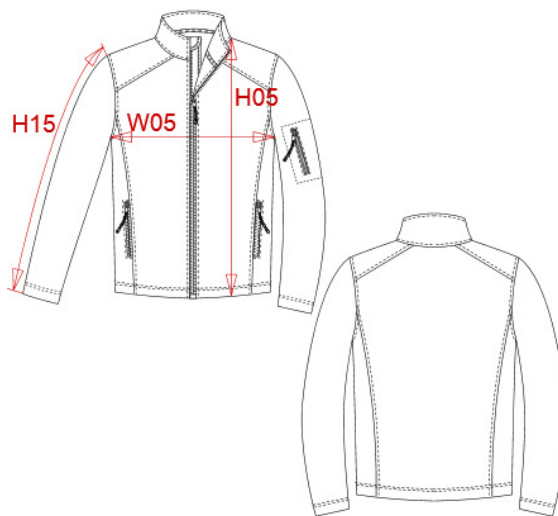
Fabric 1 : 300 gsm

**TECHNICAL DETAIL :**

3 layers bonded (Outer: Woven plain weave/Performance membrane/Inner: Anti pilling micropolar fleece) BR: 3000gsm/24h / WP: 8000mm

**ARTICLE WEIGHT :**

523 gr/pc



DESCRIPTION	
<b>Français :</b>	Veste enfant softshell
<b>English :</b>	Kids soft shell jacket
<b>Nederlands :</b>	Kids soft shell
<b>Deutsch :</b>	Kinder soft shell jacke
<b>Español :</b>	Chaqueta softshell para niño
<b>Italiano :</b>	Giacca bambino softshell
<b>Português :</b>	Blusão softshell de criança

COLORS	PANTONE SERIGRAPHIE
Black	Black
Red	200C
Navy	433C
Aqua blue	7690C

MEASUREMENT						
Description	6/8	8/10	10/12	12/14		
<b>W05</b> 1/2 largeur poitrine avec zip / 1/2 chest width with zipper	40,05	43	46	49		
<b>H05</b> Hauteur totale devant / Front total height	50,70	55,50	60,35	65,15		
<b>H15</b> Longueur dessus de manche / Sleeve length	45	49,05	53,10	57,15		

CARE LABEL				

PACKING	
Box	10 pcs / box 6/8 => L:60cm W:40cm H:17cm NW:3kg GW:4.7kg 8/10 =>L:60cm W:40cm H:17cm NW:3.3kg GW:4.9kg 10/12 =>L:60cm W:40cm H:17cm NW:3.90kg GW:5.5.3kg 12/14 =>L:60cm W:40cm H:17cm NW:4.3kg GW:5.8kg